



The John and Mary
Dahlem Environmental
Education Center

**VISITOR BUILDING
HOURS**

Tuesday - Friday
9:00 a.m. - 5:00 p.m.

Saturday
10:00 a.m. - 5:00 p.m.

Sunday
Noon - 5:00 p.m.

TRAIL HOURS

The trails and grounds
are open from dawn to
dusk every day.

CONTACT

7117 South Jackson Rd.
Jackson, MI 49201

Phone: (517) 782-3453
Fax: (517) 782-3441
www.dahlemcenter.org

**INSIDE
THIS
ISSUE:**

Executive Director Article	2
Acorns to Oaks Trees & Book Club	3
Jan./Feb. Public Programming	4
Holiday Bazaar and 2009 Review	5
Community Events	6
Friends and Donations/ Member's Corner	7
Naturalist's Niche	8

Green Schools, Green Future



Over 500 schools across the state of Michigan are currently participating in the recent Michigan Green Schools Initiative. Twenty of those schools are here in Jackson County and have attained "Green School" status or higher. This is exciting progress!

For those unfamiliar, **Michigan Green Schools** is a non-profit 501(c)3 agency dedicated to assisting all Michigan schools - public and private - achieve environmental goals which include protecting the air, land, water, and animals of our state through good ecological practices. Students pre-kindergarten through senior high school, are guided in educational stewardship activities, in an effort to attain these specifically described goals. Visit

<http://www.michiangreenschools.org> for more information.

The Dahlem Conservancy is continuing to advance its participation in this important

statewide endeavor. On December 9th the Jackson County Intermediate School District invited guest speakers and school representatives to The Dahlem Conservancy for a Green School Initiative Meeting. Representatives from Consumers Energy, Recycling Jackson, Jackson Community College, FaHoLo Camps, and the Jackson Area Career Center presented at Dahlem and shared their individual resources currently available to our community's schools in attaining "Green School" status. The Dahlem Conservancy is proud to announce its new collaboration with Recycling Jackson in coordinating the efforts of these schools. Both organizations will partner to serve as a point of contact for the participating schools and provide resource information and outreach educational programming.

With the community's help, the future stewards of our earth will learn the importance of achieving these



Mission Statement: The mission of The Dahlem Conservancy is to provide environmental education and land conservancy services to the residents of South Central Michigan.

2009 Holiday Bazaar Raises Nearly \$7,000!



A steady flow of traffic and a holiday cheer filled The Dahlem Center during our annual Holiday Bazaar Dec. 4th and 5th. Both classrooms and the Nutshell Gift Shop were generously stocked with a one-of-a-kind assortment of donated items.

The wide array of items available this year included wreaths, cookies, pies, birdseed, feeders, beeswax candles, jewelry, pottery, clothing, and much more.

Hundreds of individuals came and supported Dahlem, while completing much needed holiday shopping. As a result, Dahlem raised nearly \$7,000 this year, an increase from the two previous Bazaars!

Dahlem would like to sincerely thank everyone that came out and supported the Conservancy by shopping, contributing donated items, attending

*Paw Prints is published for members of
The Dahlem Conservancy.*

THE DAHLEM CONSERVANCY BOARD OF DIRECTORS

President: John McLaughlin
V. President: Myrna Berlet-Dutcher
Treasurer: Gary Krupa
Secretary: Bob Grover

Trustees

Kathleen Clark Victor Marshall
Betty Desbiens Rod Melling
Kelley Emerson Kathy Shaw
Todd Emmons Andy Walz
Samuel Barnes - JCC Representative

THE DAHLEM CONSERVANCY STAFF

Executive Director: Brad Whaley*
Education Director: Kimberly May *
Office Coordinator: Denise Bigham
Receptionist: Linda Danley
Naturalist: Carrie Benham
Maintenance: Mark Snedeker
People for Wildlife Coordinator: Gary Siegrist
Development Coordinator: Rebecca Mehall
Weekend Manager: Linda Crocker
Communications Assistant: Cody Porter
* Full-time staff

Are You a Dahlem Member?

If not, become a member today and you will receive:

- Free admission to most public programs
- Advanced registration and reduced rates for Day Camps and Goblin Walks
- 10% discount on purchases in the Nutshell Gift Shop
- Paw Prints monthly newsletter of events and information
- Access to trails for cross-country skiing.

Membership Fees:

Individual Membership \$24
Family Membership \$36
Senior Membership \$12

**Memberships also make great gifts
for friends and family!!**

**Help us protect the outdoors for
future generations!**

A Positive Year for Dahlem (with Challenges)

In this time of giving, The Dahlem Conservancy has many things to be thankful for. Of highest importance is the individual support you personally have given. Dahlem receives nearly half of its operating budget from our supporters in the form of memberships, memorial contributions, and special giving at our late fall annual appeal or during the Benefit Breakfast. Thank you. In 2009, with all the economic challenges our community faces, you matched the giving from 2008 and have exceeded it by a few thousand dollars!

While the growth rate was slower in 2009, we still saw increases in our membership, in our public program attendance, school program attendance, and walk-in visitation. This makes four straight years of expansion since we began operating as a new independent nonprofit. We are so proud – and thankful – for all the generosity you have shown. We created new partnerships with other community groups and people, and we worked to build on our existing relationships. The next page highlights just a few of these endeavors.

Mom and Dad told me to always tell the truth though – no matter what. So I also have to relate that this has been a very tough year in terms of our grant support. Over the past 5 years our local foundations have really helped Dahlem move toward being a fully self-sustaining organization. Our board, staff, and even the membership, I know, has been appreciative of the assistance they have provided to help us build a strong base. But this was a tough year and we're not yet where we need to be financially. With a total of \$165,000 requested (for work in 2009 & 2010), we have only been granted \$48,000. So we, like so many other organizations and individuals in our community, are making decisions right now about how best to fulfill our mission with a lack of resources.

Again, we appreciate all the assistance and encouragement you have shown Dahlem along the way. We are keeping our heads held high with all the growth and accomplishments of the past few years. We move into 2010 with a focus on helping connect people and their natural world in the most efficient and effective ways possible.

Brad Whaley
Executive Director

The Quick and Easy

By Cody Porter

With the holiday season in full swing and the approach of a new year on the horizon, it's nothing but understandable that many of our dedicated supporters simply lack the time necessary to support Dahlem in traditional fashion. Luckily, however, there are two quick and easy ways to support Dahlem.

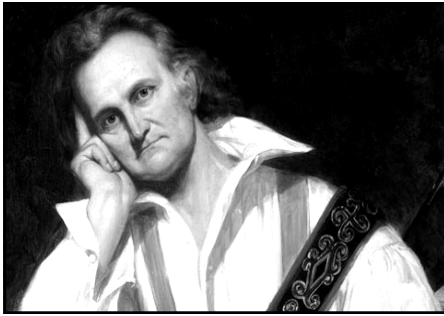
Did you enjoy a walk at the Center this year? Were you impressed with the beauty of the blooming autumn prairie or the abundance of colorful spring warblers? If so, perhaps you'd consider visiting www.jacksonmagazine.com/2/Best-of-Jackson and voting for Dahlem as the "Best Place to Take a Walk Outdoors" in Jackson Magazine's Best of Jackson contest. Voting continues until January 15th.

Also, as you search and shop online, be sure to visit www.goodsearch.com/ and "good search" for Dahlem. Every online search you make results in a charitable donation to The Dahlem Conservancy! An even larger amount will be donated with every purchase you make through "Good Shop"! Thank you!





Over 80 volunteers gathered at Dahlem's Work Bee to help with much needed improvement of our buildings and grounds.



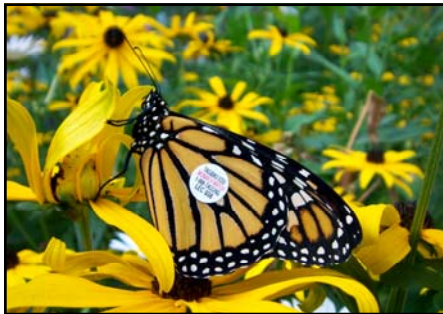
"A Day with John James Audubon" was presented in junction with the John James Audubon Exhibit at Ella Sharp



Lessons on environmental education were shared with Jackson's urban youth as a part of summer school curriculum.

2009 at Dahlem

A Year in Review



Our second year of participation in "Monarch Watch" resulted in 132 reared and



Outdoor Adventure Day Camp was extended to three weeks this summer, sharing nature with 200 children.



The 2nd annual "Birds, Blooms, and Butterflies" Festival hosted nearly 600 participants, double last year's attendance!



The 2009 Goblin Walks hosted a record attendance of 423 guests despite adverse weather conditions.



The 2nd annual Benefit Breakfast inspired generous donors to raise over \$70,000 for The Dahlem Conservancy.



Many participants enjoyed the authentic art and science of maple sugaring at the Dahlem Sugar Bush.

Free to
Big Brothers
Big Sisters
With I.D.

January 2010 Public Programming

Free to
Big Brothers
Big Sisters
With I.D.

Family Wildlife Adventure.....

Hunters of the Night: 3:00 p.m. Saturday, January 9 (*special time)

The Howell Nature Center will share with us their live beautiful birds of the night, including the stunning snowy owl! Afterwards, everyone is invited to take part in a hands-on guided owl pellet dissection and children's owl craft. At 5:00 pm an introductory presentation of several local owl call recordings will be presented and at 5:30 pm we will venture out on the trails for an owl prowl. Advanced registration for the owl prowl is required as well, due to space limitations. Bring a flashlight, warm apparel, and your curiosity!



Family Wildlife Adventure.....

Owl Prowl: 5:30 p.m. Sunday, January 10 (*special time)

Due to the overwhelming turnout of last year's Owl Prowl, an additional hike will be held. There is a limit of twelve people per hike, as traveling with a smaller group will increase the chance of hearing owls. So reserve a spot in advance, because it is sure to fill! Please bring a flashlight, warm apparel, and your curiosity!

Environment and Ecology Series.....

Sustainability & Green Jobs in Michigan: 6:30 p.m. Tuesday, January 12 (*special time)

JCC's new Director of Sustainability, Mark Rabinsky, will discuss the value of sustainability and green jobs and their impact on Michigan's near future. He will also share the efforts Jackson Community College has taken to reduce its environmental footprint and proposed initiatives to further promote sustainability in our community. After the hour presentation join us for a question and answer session on this timely topic!



Art in Nature.....

Scrapbooking Social 2:00 p.m. Saturday, January 16

Gather up your holiday cards and create something special! Education Director, Kimberly May will lead adults and teens in designing a 12 X 12 scrapbook page and a large greeting card to frame or give. Bring your own holiday photos and holiday cards. Cardstock, glue, and scissors provided. Please feel free to bring your scrapbooking tools to share with others new to this addictive hobby! Brownies, hot chocolate, and a fun time for all will be served!

Art in Nature.....

Recycling Creatively with Children 2:00 p.m. Sunday, January 17

Children are invited to cut and glue to their heart's content! Transform your holiday cards into a 3-D greeting card, a bookmark, or a gift tag, with Education Director, Kimberly May. Please bring your own holiday cards, creativity, (and photos if desired). Cardstock, glue, and scissors provided. Guardians of children under 8 are asked to stay.



Environment and Ecology Series.....

Winter Stonefly Search 1:00 - 3:00 p.m. Saturday, January 30

Join us at The Dahlem Conservancy as we search the stream for members of the Plecoptera order, more commonly known as stoneflies. These fascinating creatures have evolved a life cycle that allows them to emerge during the winter and early spring in order to maximize the abundance of oxygen found in cold water. Please call Adopt-A-Stream Coordinator, Alison Rauss at 517-784-2800 to RSVP.

All programs presented at the Dahlem Center at
7117 South Jackson Rd. Jackson, MI 49201
Advance Registration is Required.
To Register Call 517-782-3453
Admission is \$3.00 per person
Dahlem Conservancy Members Admitted FREE
unless otherwise noted

Check www.dahlemcenter.org for the most up-to-date program offerings!

*The Dahlem Conservancy
is proud to announce
that these programs are
sponsored by a generous
grant from:*



Free to
Big Brothers
Big Sisters
With I.D.

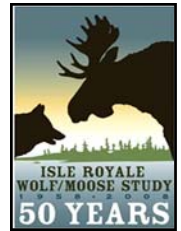
Jan/Feb 2010 Public Programming

Free to
Big Brothers
Big Sisters
With I.D.

Environment and Ecology Series.....

Wolf-Moose Study of Isle Royale: 7:00 p.m. Thursday, February 4 (*special time)

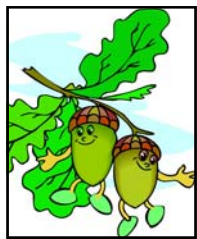
Presenter Jeffery Holden will share his eight year experience as a volunteer for the Wolf - Moose Study on Isle Royale. For over 50 years scientists and devoted volunteers have conducted the study to search for answers about the delicate balance between the island's wolf, moose, and climate. This is the longest study of any predator-prey relationship in the world. Come learn the details of their discovers and how you can help.



Discover Dahlem Outdoors.....

Guided Nature Hikes: 9:00 a.m. - 11:00 a.m. Every Second and Fourth Tuesday

Join Dahlem staff for an educational and rewarding hike on a portion of Dahlem's five miles of scenic trails in search of our seasonal fauna and flora. Whether you are a birder with your eyes to the sky, an amateur botanist with your nose to the ground, or simply enjoy a stroll outdoors, all are welcome. Please wear appropriate outdoor attire and hiking shoes. Binoculars suggested but not required.



Little Acorns Returns!



Register today for this popular series of one-hour adventures in nature for toddlers with an adult companion. New themes each month!

Mondays 1:30-2:30 p.m. at The Dahlem Center

Toddler Nature Program

\$25/month member \$35/month non-members

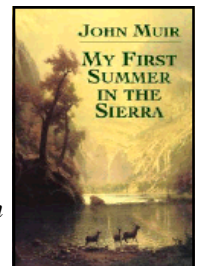
The Dahlem Book Club

New members are always welcome! For more information, please call 517-782-3453.

January 14 1:00 p.m. - 3:00 p.m. at The Dahlem Center

“My First Summer in the Sierra” by John Muir

John Muir, a young Scottish immigrant, had not yet become a famed conservationist when he first trekked into the foothills of the Sierra Nevada, not long after the Civil War. He was so captivated by what he saw that he decided to devote his life to the glorification and preservation of this magnificent wilderness. My First Summer in the Sierra, whose heart is the diary Muir kept while tending sheep in Yosemite country, enticed thousands of Americans to visit this magical place, and resounds with Muir's regard for the "divine, enduring, unwasteable wealth" of the natural world. A classic of environmental literature, My First Summer in the Sierra continues to inspire readers to seek out such places for themselves and make them their own.



The Dahlem Conservancy's E - Newsletter

Thank you to all who have submitted your email address for our up-coming e-newsletter. We hope to have it distributed soon. Please continue to submit your emails to kmay@dahlemcenter.org if you would like to receive this emailed listing of Dahlem's exciting scheduled programs.



All programs presented at the Dahlem Center at
7117 South Jackson Rd. Jackson, MI 49201

Advance Registration is Required.

To Register Call 517-782-3453

Admission is \$3.00 per person

Dahlem Conservancy Members Admitted **FREE**
unless otherwise noted

Check www.dahlemcenter.org for the most up-to-date program offerings!

The Dahlem Conservancy
is proud to announce
that these programs are
sponsored by a generous
grant from:




Wanted: Volunteers with Specialized Skills

As Dahlem continues to expand, new projects and needs are always arising. Listed are current, specific needs requiring specialized talents for completion.

If you are interested in pursuing any of these projects, please call 517-782-3453.

- Electrical/sound engineering skills needed to assemble sound system for the indoor Wildlife Viewing Window.
- Audio/visual skills needed to install projection unit in the Dutcher Classroom.
- Knowledge of various wildlife (insects, wildflowers, mammals, etc.) needed to help gather species inventories.

Cross Country Skiing at Dahlem

This winter  promises to be a **snowy one!** Come out and make the most of the snow at Dahlem!



Cross country skiing is FREE to all Dahlem members. With over five miles of scenic winter trails, it's  hard to imagine anywhere better in Jackson to enjoy the breathtaking beauty of winter in Michigan. **Not a member? Call 517-782-3453 or stop by to join the Dahlem family!**

Yoga Series at Dahlem

January 20th - March 10th

6:30 p.m. in the Dutcher Classroom

\$64.00 for 8 weeks or \$10.00 per drop-in

Join Certified Massage Therapist & Yoga Instructor, Peggy Smith, for a unique community yoga series presented in Dahlem's tranquil setting. Please contact Peggy at 517-745-8140 or visit her website at www.namastaahge.com.



Stonefly

COMMUNITY CONNECTIONS

Jackson County Conservation District

www.jacksoncd.org/

Food Systems Economic Partnership

www.fsepmichigan.org

Up-Coming Community Events

Jackson County Conservation District Annual Meeting

January 26th
5:30 pm
Gene Davis and Sons
Banquet Center

Join us for the 61st annual Jackson County Conservation District meeting.

The night's events include a short business meeting, the election of 2 board members, and a short presentation by motivational speaker, Vic Verchereau.

There is a \$13 cost per person which includes a buffet style meal. Visit www.jacksoncd.org/ for more info.

Jackson Camera Club Monthly Meetings

January 6th
7:00 pm—9:00 pm
Northwest Elementary
School Library
3737 Lansing Ave.

Meetings are held every first and third Wednesday during the school year. Guest speaker Marcia Butterfield will be speaking. Visitors are always welcome and light refreshments are generally served. The club holds exhibitions, competitions, outings and training and discussion sessions. Contact President Diane Deming for more information 517-529-9117.

Food Systems Economic Partnership

Northern Michigan Small Farms Conference

January 30th
8:30 am - 5:00 pm
Grayling High School

Farmers are greeting the challenges of today's agricultural world with new found passion and creative production, marketing, and management strategies. The Northern Michigan Small Farm Conference brings these success stories to you.

http://www.msue.msu.edu/portal/default.cfm?pageset_id=26792

News from the Friends of Dahlem

The Friends of Dahlem hope by now you are enjoying the bright colors of your Poinsettia Plants (our recent fundraiser) and have gotten into the holiday spirit. We thank the folks who ordered plants from us and the volunteers who helped on plant pick-up days at the Center. Our profits from this sale will go towards the salary of our naturalist and educational programs at Dahlem.

Rakers Acres of Litchfield supplied us with their beautiful plants and all the paperwork that goes with this fundraiser. Lori Ricketts was our Rakers coordinator. Mary White, Friends secretary, was chairman for this activity.

Holiday Bazaar volunteers this December were Lousie Riggs, Barb Wellman, Mary White, Kathy Clark, Betty Desbiens, Allie Mae and Bob Henning, Debbie and Fred Marshall, Ken and Ruth Smith, Dorothy Dyer, Irene Sonnett, Sharon Best, Val Periat, Vera Tuttle, Maria Maldonado, Genny and Bob Price, Lauri and Craig Dahlem, Delores Walbreccq, Carrie Benham and Pat Reynolds. Special donations were given to us by Fred Marshall Family, Delores Walbreccq, Evelyn Leonard, and Phyllis Murch.

Ninety-eight wonderful bakers contributed to the tables of creative

candies, breads, cakes, cookies, rolls, snacks, sauces, pickles and jams. We appreciate your time and effort donating these great goodies. Again this year our profits surpassed the previous years. If you would like to bake again next year, let us know. If you would like to take a break from baking, let us know. We try to rotate the calling list every year.

From now on until Spring, Friends will sell soda and popcorn at some of the weekend programs held at the Center.

Best wishes for the holidays and good health to all of you.

-Kathy Clark

Thank You For Your Generous Donations:

(11/20/09 - 12/16/09)

William M. Abbot
Barbara T. Anderson
Dave Betz
Bill & Vi Sigmund Foundation
Laurence & Valerie Bullen
Nancy Burger
John & Jean Calvert
Matt & Anne Marie Campbell
Shirley Chu
Mr. & Mrs. Gerald Colcun
Janice Crispell
Harold & Ruth Crites
Dennis & Sarah DaPra
Lola Dodge
Thomas & Jeanne Draper
Dorothy Dyer
Kenneth & Mary Ellenbaas
Charles Engel

Thomas & Nancy Evanson
Raymond Fix
Travis & Georgia Fojtasek
Myer & Lois Franklin
Regina Funkhouser
Leslie Gibbs
Linda Goings
John & Susan Gruel
Carole Hartstuff
Margaret & Lee Hausler
David & Janet Horthrop
Jackson Eye-openers Lions Club
Jackson Garden Club
Jann & Gary Krupa
Jeff Kurfess
James Lefere
Meg & Dean Martin
Garry & Mary May
Alice Medlar
Rebecca Mehall
Charles & Christina Murphy
John & Diana Nally

Sandra & Bill Nichols
Ronald & Susan Niedzielski
Jan O'Shaughnessy
John & Frances Parker
Ron & Nancy Parzych
R. Douglas & Theresa Race
K.V. Rao
Mary Elizabeth Rees
James & Pam Rossmann
David & Carol Ann Saum
Nancy & Robert Gaecke Smith
Allen Spiess
Letha Springer
Robert & Sonia Sutch
Albert Thorrez
Delores Walbreccq
Kenneth & Julie Walz
Robert & Dianne Welsh
Ron & Anita Whaley
Mary & Don White
Craig & Susan Whitmore
John & Phyllis Woodruff

Brian & Carol Wright
In Memory of Rozlin Shea Kennedy
Kim & Valerie Kennedy
In Memory of Peter & Marge Maxwell
Matt & Candice Murphy
In Memory of Norene Zernickow
Gary & Nancy Siegrist

Gifts In-Kind

Kathy Lincoln - 30 - second radio ad for Holiday Bazaar
Sleeping Bear Farms - Beulah, Michigan - Honey
John McLaughlin - Copies of tax map

Welcome New Members!

William M. Abbott
Steve & Sue Anderson
Thomas Berthiaume
Matt & Anne Marie Campbell
Collin Conant
Charlotte Finnegan
Margaret Gilson
Bob & Pat Goldsmith
Jack Hanson
Dennis & Penny Hatt
David & Janet Horthrop
Amy Johncox
Margaret King
Susan Lackey
Donna & Jon Lake
Eileen Lehnert & Dave Spalding
Dr. Ed & Jeanine Mathein
David & Nancy McCarrell
Terry & Sue Mierzwa
Mary Moburg

Mrs. A.C. Moller, Jr.
Jane Murray
Margaret O'Connor
Bob & Heather Price
Sandhill Crane Vineyards
Mark Rabinsky
Ronn Rasmussen
Helen Rossell
Alison & Rob Shroads
Tim & Sarah Snyder
Letha Springer
Sandra Steele
Alana Tuckey
Edwin & Teri Utz
Ric & Angela Walton
Scott & Cindy Weaver
Richard & Katherine White
Jonathan Williams
John & Phyllis Woodruff

Thank You for Your Membership Renewal!

Richard & Pat Byler

Bruce & Pegg Clevenger
Mr. & Mrs. Gerald Colcun
Harold & Ruth Crites
Dirk & Tina Dietsch
John & Joan Dobben
Dan & Sherry Dodge
Daryl & Linda Frederick
Carol Lee Gates
John & Susan Gruel
Mrs. Bea Hills
Nolan Hughey
Frank Jamieson
Fr. Dusan & Patty Koprivica
Mickey & Connie Kress
Jann & Gary Krupa
Dale Kurtz
Andy Ladwig
Les & Eleanore Langford
Jack & Nancy Lapinski
Dr. Kevin Lavery & Family
Jim Lefere
John & Carol Lent

Ed Lewis & Kristy Miller
James Lytle
Bev & Ted Magee
Vic & Gretchen Marshall
Mr. & Mrs. John Mason
Michael & Pamela Mathews
Clyde & Laurel Mauldin
Garry & Mary May
Lois McGauley
Kirk & Marty Mercer
Tom & Maddy Miller
Tom Mulnix
Ron & Susan Niedzielski
Marjorie Pelkey
Kon & Chris Prokos
K.V. Rao
Connie Richardson
Jim & Janet Seitz
Robert & Roberta Sexton
Sherman & Norma Smith
Ruth Stressman
David & Julie VanWinkle
Les & EJ Williams

Naturalist's Niche

"Vagrant Bird Species"

by Cody Porter

There is perhaps no parallel in the excitement an avid bird-watcher receives from the report of a bird spotted well outside its normal range.

Birders in the area who keep in close contact with each other or are registered on local listservs are well aware that late Fall 2009 produced many welcomed surprises in terms of vagrant bird species to the Michigan area. It seems with each week came a new, highly unexpected, often pelagic species that had birders throughout the state in a frenzy. Whether it was the Arctic Tern reported roughly 1,000 miles off course or the Ancient Murrelet sighted over 2,000 miles away from its west coast range, the abundance and diversity of vagrant species was astounding.

Along with the excitement that comes with these out-of-place birds, an important question arises; what



causes birds to wander so far?

Although the topic is poorly understood and could potentially be more complicated than current science suggests, there are generally three factors that are associated with vagrancy in birds.

Jackson birders of at least a year ago will remember the unexpected invasion of White-winged Crossbills in our area. An inadequate crop of conifer cones, the preferred food of crossbills, in the boreal forests was revealed to be the likely cause of this sudden irruption. The erratic wanderings of this species wonderfully illustrates birds traveling well out of their normal range in search of a sustainable food

supply, a practice employed by many other species including Bohemian Waxwings and Evening Grosbeaks.

An interesting dimension to many vagrant birds is that a large percent are juveniles. While inexperience might very well be a contributing culprit to this phenomenon, it is likely that these birds are victims of non-advantageous genetic mutations or other anomalies in the bird's magnetic sensibilities that are used to navigate during migration.

Perhaps the most common cause of vagrant species are storms that blow birds off the course of their usual migration. This is also the cause of some of the more extensive cases of vagrancy, including North American birds being blown across the Atlantic Ocean to Europe!

No matter the cause of a vagrant bird, the phenomenon is a truly exhilarating experience to witness. For updates on vagrant species being spotted in the area, simply subscribe to the various listservs provided at <http://michiganaudubon.org/birder>

Return Service Requested

www.dahlemcenter.org

Jackson, MI 49201

7117 S. Jackson Rd.

The Dahlem Conservancy

NONPROFIT ORG
U.S. POSTAGE
PAID
JACKSON, MI
PERMIT NO. 36